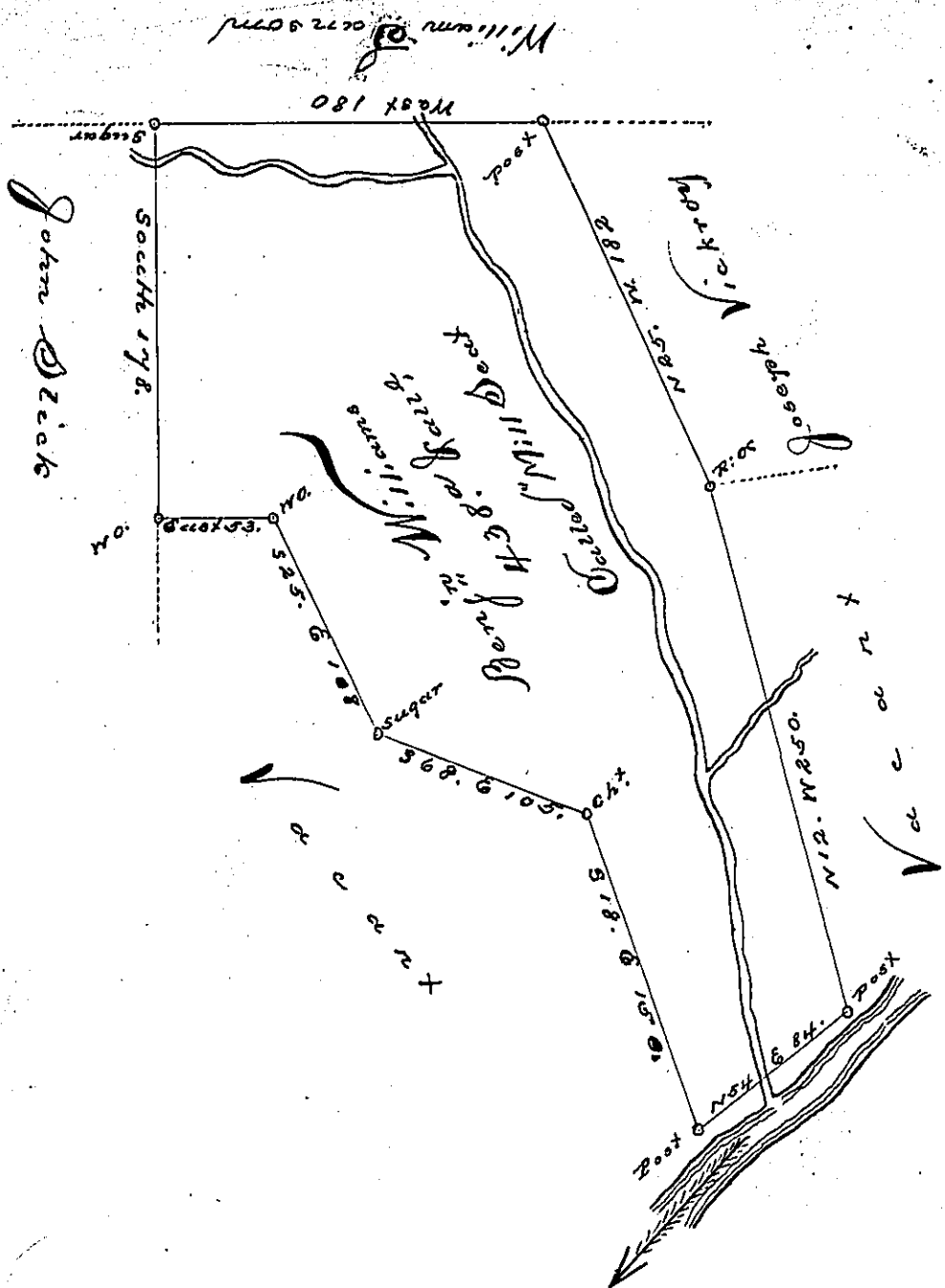


257-96



Situated on the North Side of Little Conemaugh including the mouth of Spruce Run, About two Miles below the mouth of the Elk Lick fork of said Conemaugh in Quakering Township Bedford County (now Somerset) And Surveyed the 16<sup>th</sup> day of June 1797. In pursuance of a Warrant dated the 11<sup>th</sup> of Dec<sup>r</sup> 1794.

Daniel Brodhead Esq.  
 Surveyor Gen<sup>l</sup> of Pennsylv<sup>a</sup>

John Wells Deputy

IN TESTIMONY that the above is a copy of the original remaining on file in the Department of Internal Affairs of Pennsylvania, made conformably to an Act of Assembly approved the 16th day of February, 1833, I have hereunto set my Hand and caused the Seal of said Department to be affixed at Harrisburg, this

First day of June, 1897,

James W. Fatta  
 Secretary of Internal Affairs.